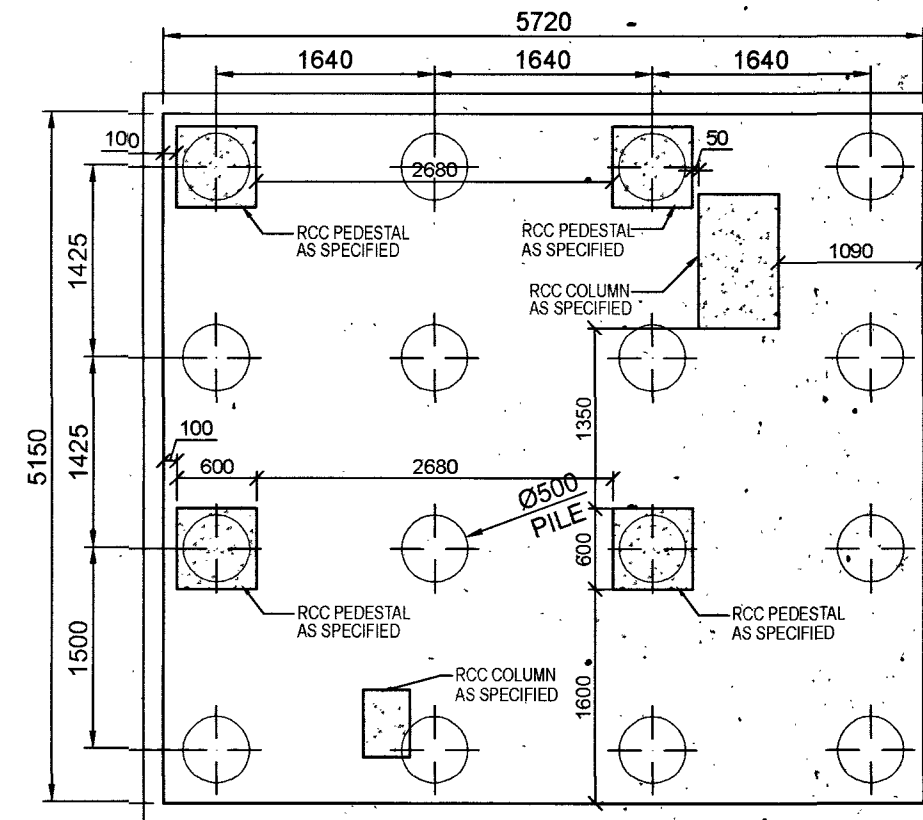
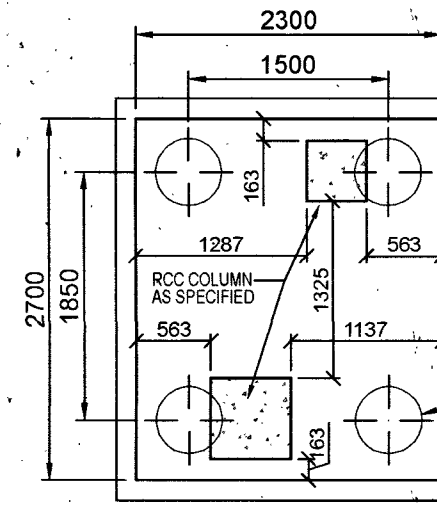


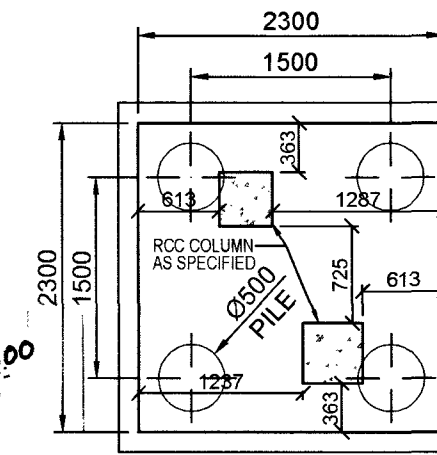
PLAN OF PILE CAP (P1/PC16)



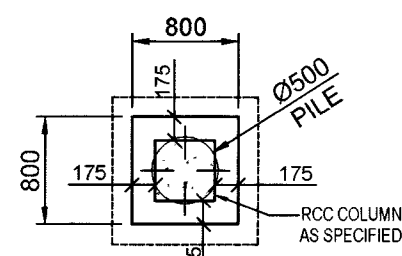
PLAN OF PILE CAP (P1/PC17)



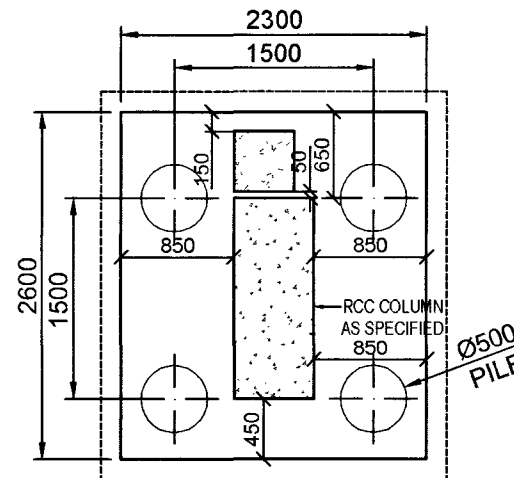
PLAN OF PILE CAP (P1/PC18)



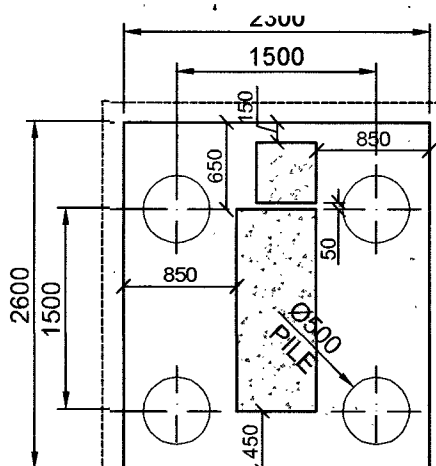
PLAN OF PILE CAP (P1/PC19)



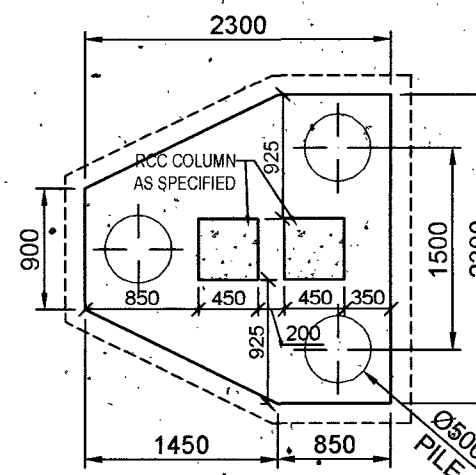
PLAN OF PILE CAP (P1/PC20)



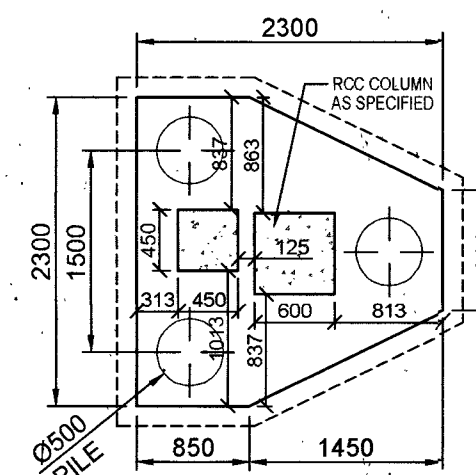
PLAN OF PILE CAP (P1/PC21)



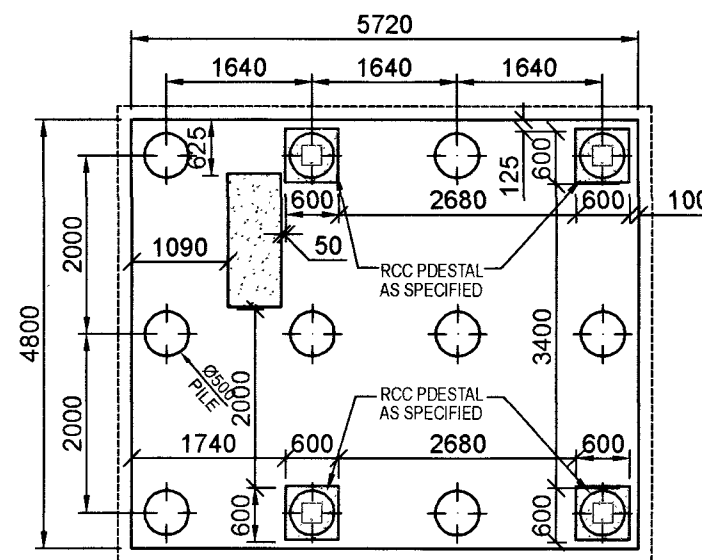
PLAN OF PILE CAP (P1/PC22)



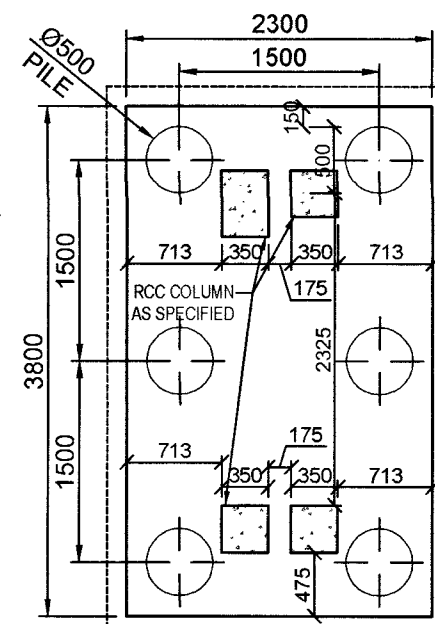
PLAN OF PILE CAP (P1/PC23)



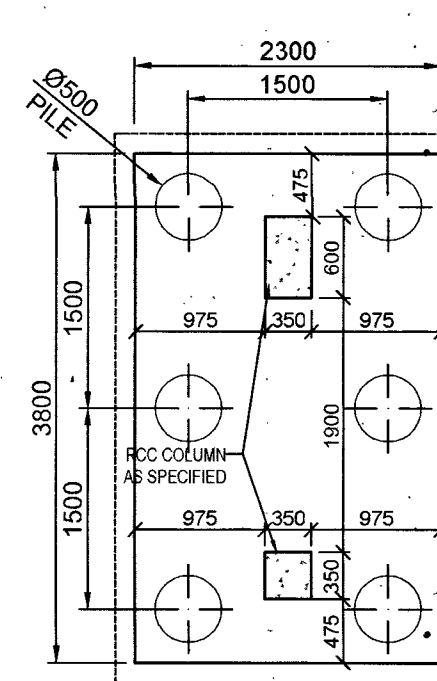
PLAN OF PILE CAP (P1/PC24)



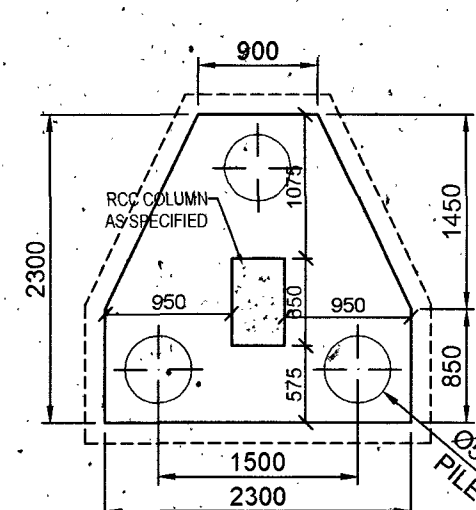
PLAN OF PILE CAP (P1/PC25)



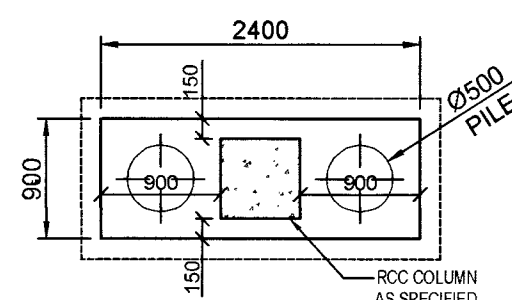
PLAN OF PILE CAP (P1/PC26)



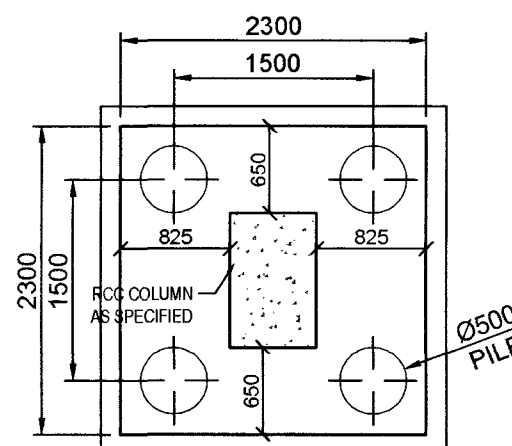
PLAN OF PILE CAP (P1/PC28)



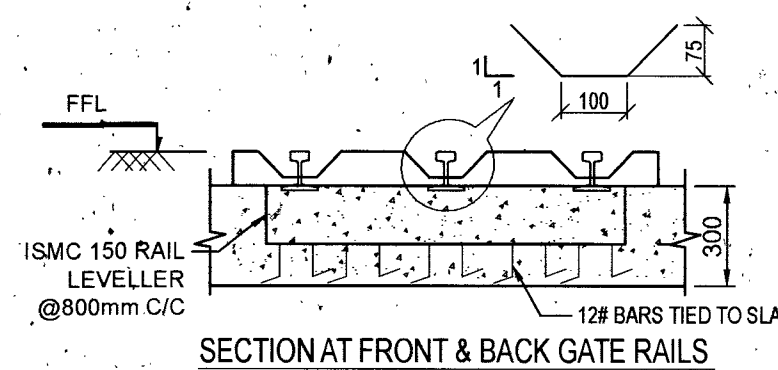
PLAN OF PILE CAP (P1/PC30)



PLAN OF PILE CAP (P1/PC27)



PLAN OF PILE CAP (P1/PC29)



SECTION AT FRONT & BACK GATE RAILS

NOTES

- 1 ALL DIMENSIONS AND LEVELS GIVEN ARE IN MILLIMETERS UNLESS OTHERWISE SPECIFIED
- 2 FIGURED DIMENSIONS ONLY SHALL BE FOLLOWED.
- 3 BOB= BOTTOM OF BEAM
TOB= TOP OF BEAM

03-03-23	P1/PC18 CORRECTED	
DATE	DESCRIPTION	SIGN
	REVISIONS	

VETTED BY

ALL DETAILS HAVE BEEN THOROUGHLY CHECKED AND ARE IN COMPLIANCE TO STANDARDS, CODES, REGULATIONS IN RESPECT OF SAFETY, SOUNDNESS AND ECONOMY.

[Signature]

PROVN OF HANGAR AND ANNEXE BUILDING AT INS DEGA VISAKHAPATNAM

PLAN OF PILE CAP PC16 TO PC25

SHT NO.	S03	HELIOS ENGINEERING CONSULTANTS #38-34-66 FCI COLONY MARRIPALEM VISAKHAPATNAM - 530018
PRO NO.	ST2204	
SCALE.	AS NOTED	
DRN BY.	KSS	
DATE.	28-02-2023	

DESIGNED BY

[Signature]
DV TRINADH RAO

CHECKED BY

[Signature]
S SURYA
MS (STRUCTURES)

**CHIEF ENGINEER (NAVY)
VISAKHAPATNAM**

REF.DRG.NO : CEVZ/2022/WD-2120(S) Sht.No.3R40

DESIGNS & DRAWINGS PREPARED UNDER CONSULTANCY FROM M/S HELIOS ENGINEERING CONSULTANTS AND VETTED BY ANDHRA UNIVERSITY

[Signature]
Keshav Raman
Lt Col
SO (Design)
For Chief Engineer

[Signature]
Srikrishna Nalla, Iust
CE (NAVY)
Director (Design)
For Chief Engineer